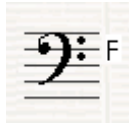


Introduction to pitch notation for guitarists and bassists

Treble and bass clef



The treble clef or 'G clef' is used to notate higher pitched instruments such as guitar and violin. It curls around the second line, showing where G lies.



The bass clef or 'F clef' is used to notate lower pitched instruments such as the bass or left hand part on a piano. It curls around the fourth line, showing where F lies.

Guitar

Please identify if these open string notes fall on a line or space then play as written, the first two are given:

Using notation only, rewrite the six notes of the open strings from lowest to highest. Take care to draw accurately on a line or space as needed. Label the note names underneath, the first is given:

Bass

Please identify if these notes fall on a line or space then play as written, the first is given:

Bass continued...Using notation only, rewrite the four notes from lowest to highest. Label the note names underneath, the first is given:

Some mnemonics to help remember note names on the staff

Electric Guitar

Every Green Bus Drives Fast

E. Gtr.

F A C E

Bass Guitar

Green Buses Drive Fast Always

B. Gtr.

A C E G

Note words for guitar/treble clef-notes can be combined to make simple words. Make four more of your own

A G E D

Note words bass guitar/bass clef-make four more of your own

F E E D